

FACILITY EXPLORER BUILDING MANAGEMENT SYSTEM

SERVER SOFTWARE

FACILITY EXPLORER SERVER SOFTWARE

FX14

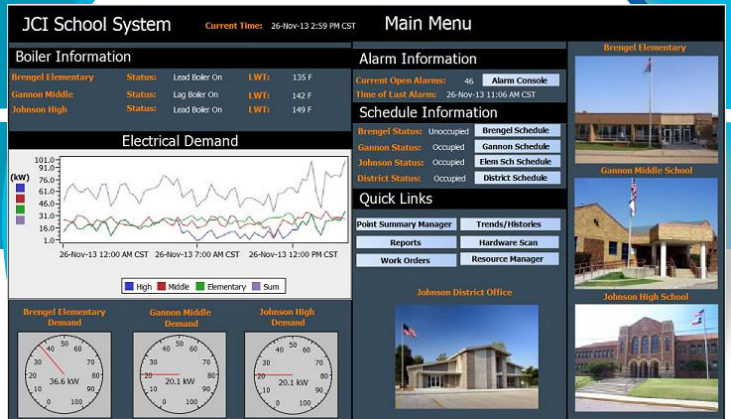
SUPERVISORY SOFTWARE & LICENSES

The Facility Explorer® (FX) Server software expands the capabilities of one or more FX Supervisory Controllers, in addition to managing IP field devices directly. The FX Server collects, stores, and provides access to large amounts of information (such as alarms, events, and histories) sourced from one or more FX Supervisory Controllers. The FX Server also coordinates the integration of multiple FX Supervisory Controllers networked together on a single project by providing network-wide automation and coordination, such as master scheduling, system-wide database management, and integration with enterprise software applications and from IP field devices.

The FX Server includes a graphical user interface and configuration tool you can access with a web browser. Multiple users can concurrently connect to the FX Server. User security and presentation preferences are managed through user profiles, login IDs, and passwords. Remote access is easily achieved from an intranet, WAN, LAN, and Internet connection.

FEATURES

- **Web-based user interface** - Features a bold and intuitive new interface that is modern and easy to use. An HTML5 profile has been added to provide a more robust web experience.
- **Powerful security** - Provides a defense-in-depth approach to security that requires users to use strong credentials. Provides encrypted data. Easy to configure user permissions.
- **Centralized enterprise-wide information** - Provides a single access point for a project consisting of multiple FX Supervisory Controllers or multiple IP field controllers.
- **Large storage repository for alarms, events, and histories** - Allows large amounts of historical information to be accessed and archived.
- **Niagara® analytics** - Allows you to apply a variety of analytic algorithms and diagnostics to both historical and real-time data.



FACILITY EXPLORER BUILDING MANAGEMENT SYSTEM

SERVER SOFTWARE

FX14 FACILITY EXPLORER SERVER SOFTWARE



ORDERING INFORMATION

FX SERVER

Note: Maintenance cannot be purchased for any period beyond December 31, 2025.

FX Server Release 14.0 and later do not require additional licenses for BACnet, LonWorks, Modbus, oBIX, KNX, or SNMP integrations.

FX Server points licenses are now required when the FX Server manages IP field controllers. Select multiple points licenses to total the amount of points required. For example, if the FX Server requires additional driver points capacity of 1700 points, select FX-SLPL500-0E and FX-SLPL01K-0 for a total of 1750 points.

Select the FX Server license FX-SL000-M#-0E for systems made up of only IP Field Controllers and do not require an FX Supervisory Controller. FX Server points licenses are not restricted to just that model of FX Server.

CODES	DESCRIPTION
FX-SL000-0E	License enabling FX Server with 0 Niagara network connections. For use with IP.
FX-SL001-0E	License enabling FX Server with 1 Niagara network connection.
FX-SL010-0E	License enabling FX Server with 10 Niagara network connections.
FX-SL100-0E	License enabling FX Server with 100 Niagara network connections.
FX-SLUNL-0E	License enabling FX Server with unlimited Niagara network connections.
FX-SLAX-0E	License server license that allows you to run Niagara AX.
FX-SL000M1-0E	License enabling FX Server with 0 initial software maintenance for 1 year.
FX-SL001M1-0E	License enabling FX Server with 1 initial software maintenance for 1 year.
FX-SL010M1-0E	License enabling FX Server with 10 initial software maintenances for 1 year.
FX-SL100M1-0E	License enabling FX Server with 100 initial software maintenances for 1 year.
FX-SLUNLM1-0E	License enabling FX Server with unlimited initial software maintenances for 1 year.
FX-SLDEMO-0E	Engineering/demo license for FX Workbench client software. Enables all features needed to engineer and demonstrate FX Supervisory Controllers and FX Server stations. Intended for installing contractors. Requires support fee. Expires yearly.
FX-DVDCOPY	FX Supervisory Controller family software, delivered on DVD. Contains latest installation images for FX Server and FX Workbench. Licenses not included—order licenses separately.

FX SERVER POINTS LICENSE

CODES	DESCRIPTION
FX-SLPL500-0E	License enabling 500 point support for FX Server
FX-SLPL1K-0E	License enabling 1250 point support for FX Server
FX-SLPL2K-0E	License enabling 2500 point support for FX Server
FX-SLPL5K-0E	License enabling 5000 point support for FX Server
FX-SLPL10K-0E	License enabling 10000 point support for FX Server
FX-SLPL25K-0E	License enabling 25000 point support for FX Server
FX-SLPL50K-0E	License enabling 50000 point support for FX Server

FACILITY EXPLORER BUILDING MANAGEMENT SYSTEM

SERVER SOFTWARE

FX14 FACILITY EXPLORER SERVER SOFTWARE



ORDERING INFORMATION

FX SERVER SOFTWARE ACCESSORIES

CODES	DESCRIPTION
FX-SLMYSQL-0E	License enabling MYSQL database support for FX Server
FX-SLSQL-0E	License enabling SQL database support for FX Server
FX-SLCSV-0E	License enabling CSV support for FX Server
FX-SLORCL-0E	License enabling Oracle database support for FX Server

FX SERVER UPGRADE

FX Server upgrades are required to increase the number of FX Supervisory Controllers that an existing FX Server can manage.

CODES	DESCRIPTION
FX-SLU001-6E	License enabling 1 additional Niagara network connection for FX Server.
FX-SLU100-6E	License enabling 100 additional Niagara network connections for FX Server.
FX-SLUUNL-6E	License enabling unlimited additional Niagara network connections for FX Server.

FX SERVER SOFTWARE MAINTENANCE

Note: Maintenance cannot be purchased for any period beyond December 31, 2025.

CODES	DESCRIPTION
FX-SL000M1-6E	License enabling 1 additional year of software maintenance for FX Server with 0 Niagara network connections.
FX-SL000M3-6E	License enabling 3 additional years of software maintenance for FX Server with 0 Niagara network connections.
FX-SL000M5-6E	License enabling 5 additional years of software maintenance for FX Server with 0 Niagara network connections.
FX-SL001M1-6E ¹	License enabling 1 additional year of software maintenance for FX Server with 1 Niagara network connection.
FX-SL001M3-6E ¹	License enabling 3 additional years of software maintenance for FX Server with 1 Niagara network connection.
FX-SL001M5-6E ¹	License enabling 5 additional years of software maintenance for FX Server with 1 Niagara network connection.
FX-SL010M1-6E	License enabling 1 additional year of software maintenance for FX Server with 10 Niagara network connections.
FX-SL010M3-6E	License enabling 3 additional years of software maintenance for FX Server with 10 Niagara network connections.
FX-SL010M5-6E	License enabling 5 additional years of software maintenance for FX Server with 10 Niagara network connections.
FX-SL100M1-6E ¹	License enabling 1 additional year of software maintenance for FX Server with 100 Niagara network connections.
FX-SL100M3-6E ¹	License enabling 3 additional years of software maintenance for FX Server with 100 Niagara network connections.
FX-SL100M5-6E ¹	License enabling 5 additional years of software maintenance for FX Server with 100 Niagara network connections.
FX-SLUNLM1-6E ¹	License enabling 1 additional year of software maintenance for FX Server with unlimited Niagara network connections.
FX-SLUNLM3-6E ¹	License enabling 3 additional years of software maintenance for FX Server with unlimited Niagara network connections.
FX-SLUNLM5-6E ¹	License enabling 5 additional years of software maintenance for FX Server with unlimited Niagara network connections.

Note

¹ In addition to providing additional software maintenance on FX Servers at or above Release 14.0, these same parts are required to migrate a legacy FX Server at Release 6.x to Release 14.0 and later.

FACILITY EXPLORER BUILDING MANAGEMENT SYSTEM

SERVER SOFTWARE

FX14 FACILITY EXPLORER SERVER SOFTWARE



ORDERING INFORMATION

FX SERVER - NIAGARA ANALYTICS

CODES	DESCRIPTION
FX-ASL0250-OE	License enabling 250 analytic points for Niagara Analytics on an FX Server at FX Supervisory Family Software Release 14.2 or greater. Only available to partners that are Niagara Analytics TCP trained.
FX-ASL1000-OE	License enabling 1,000 analytic points for Niagara Analytics on an FX Server at FX Supervisory Family Software Release 14.2 or greater. Only available to partners that are Niagara Analytics TCP trained.
FX-ASL2500-OE	License enabling 2,500 analytic points for Niagara Analytics on an FX Server at FX Supervisory Family Software Release 14.2 or greater. Only available to partners that are Niagara Analytics TCP trained.
FX-ASL010K-OE	License enabling 10,000 analytic points for Niagara Analytics on an FX Server at FX Supervisory Family Software Release 14.2 or greater. Only available to partners that are Niagara Analytics TCP trained.
FX-ASL050K-OE	License enabling 50,000 analytic points for Niagara Analytics on an FX Server at FX Supervisory Family Software Release 14.2 or greater. Only available to partners that are Niagara Analytics TCP trained.
FX-ASL100K-OE	License enabling 100,000 analytic points for Niagara Analytics on an FX Server at FX Supervisory Family Software Release 14.2 or greater. Only available to partners that are Niagara Analytics TCP trained.
FX-ASLUNL-OE	License enabling unlimited analytic points for Niagara Analytics on an FX Server at FX Supervisory Family Software Release 14.2 or greater. Only available to partners that are Niagara Analytics TCP trained.

TECHNICAL SPECIFICATIONS

FX SERVER

Processor	Intel® Xeon® CPU E5-2640, 64-bit (or better), compatible with dual and quad core processors
Operating System	64-bit: Windows® 10, Windows 8.1 Enterprise, Windows Server 2012 R2 Standard, Windows Server 2016, Red Hat Enterprise Linux 7.4
Web Browser	Windows Internet Explorer® version 5 or later or Mozilla® Firefox®
Memory	6 GB minimum; 8 GB or more recommended for larger systems
Hard Drive	4 GB minimum, more recommended depending on archiving requirements
Display	Video card and monitor capable of displaying 1024 x 768 pixel resolution or greater
Network Support	Ethernet adaptor (10/100 MB with RJ-45 connector)
Connectivity	Always on, high-speed Internet Service Provider (ISP) connection recommended for remote site access (DSL, T1, or cable modem) and IPv6 compliant